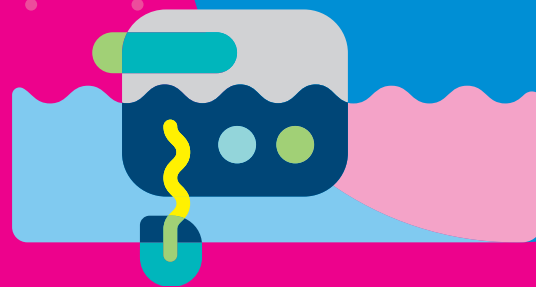


**Stock up now because
your research can't wait.
You are passionate
for science.**

SPECIAL OFFERS

Pipettes & Lab Equipment

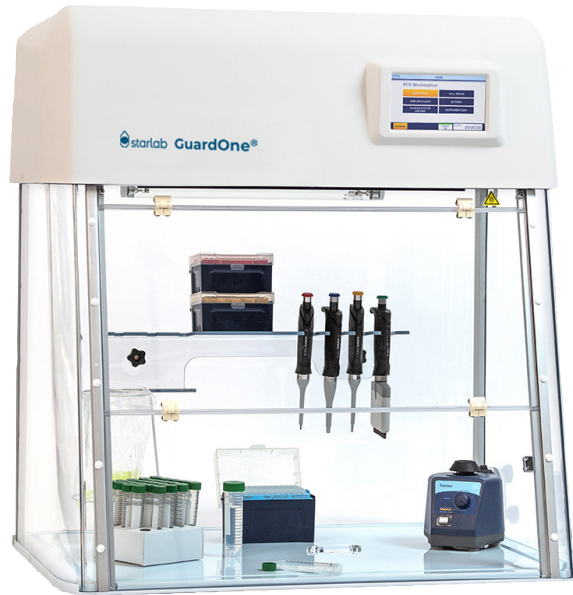
Valid until 13.12.2024.



Passionate for science.



GuardOne® Workstation.



from: CHF 3981.57*

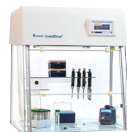
DESIGNED WITH THE ENVIRONMENT IN MIND

Long-life consumables reduces waste. Minimal packaging volume reduces transportation needs. Minimal power consumption.

AVOID CROSS-CONTAMINATION & THE RISK OF DUPLICATING WORK

Protect your valuable samples and reagents¹⁾ to help prevent both the extra time, cost and waste involved when having to duplicate contaminated work. Starlab's GuardOne® Workstation provides the ideal clean and controlled environment. GuardOne® is perfect for your PCR / qPCR applications or any other application that requires a controlled, clean environment.

GuardOne® has been designed with convenience in mind. All functions are controlled via the glove compatible, easy to use touchscreen. Tool-free HEPA filter exchange and UV lamp exchange in just 2 minutes!



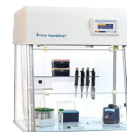
Dead Air Workstation 32"

S8040-1000
CHF 4,684.20
CHF 3,981.57*



Dead Air Workstation 48"

S8040-1001
CHF 5,942.20
CHF 5,050.87*



Laminar Flow Workstation 32"

S8040-0000
CHF 5,566.46
CHF 4,731.49*



Laminar Flow Workstation 48"

S8040-0001
CHF 7,418.72
CHF 6,305.91*

- One-touch QuickStart / QuickStop settings
- Efficient UV_{245 nm} decontamination with timer function
- Efficient, class H14 HEPA filter with pre-filter provides ISO class 5 working environment²⁾
- Real-time airflow measurement²⁾
- Life-span monitoring of consumables
- Virtually maintenance-free
- Easy to clean
- Easy, tool-free 15-minute assembly

¹⁾GuardOne® is not designed to protect the user.
²⁾Laminar flow models only.



Starlab Vortex Mixer.



WATCH VIDEO

GREAT FEATURES. GOOD VIBRATIONS!

The new Starlab Vortex Mixer is ideal for the gentle mixing of samples right up to vigorous vortex mixing and the resuspending of cells or chemical pellets.

- Unique, glove compatible touch screen
- Precise vortexing speeds (300 to 3,500 rpm)
- One-touch pre-set options for speed / time
- Touch or continuous operation
- End of run audible alarm
- Power-saving sleep mode
- Optional adapters available separately to mix up to 15 microcentrifuge tubes or one microplate (up to 1,500 rpm)

TOUCH MODE
Minimal pressure required to maintain vibration. Mix single or multiple tubes up to 3,500 rpm.

GLOVE COMPATIBLE TOUCHSCREEN
for precise speed and time settings

SMOOTH, QUIET OPERATION



POWER-SAVING SLEEP MODE

SPEED RANGE
300 – 3,500 RPM

ANTI-SLIP FEET
provides stability on the bench during mixing

Vortex Mixer.

Art. No. S8010-0000

ONLY: CHF 354.74¹⁾

The Starlab Aspirator.

USE TWO HAND CONTROLLERS WITHOUT ANY LOSS OF PERFORMANCE

- Powerful pump that can operate two hand controllers without any loss of performance
- Auto ON-OFF pump switch
- Low noise emission for a quieter working environment
- Supplied with everything you need to get started
- Versatile! A whole range of accessories also available
- The perfect partner for use with Starlab's bottle top filtration system

N2400-9000 includes everything you need to get started: Aspirator, 4 Litre Polypropylene Bottle with Protection Filter and Inlet Pipe, Hand Controller, including 2.5 m Tubing, a Wall Mount, an Adapter for Pipettes, and an Adapter for Pipette Tips.



DESIGNED FOR THE SAFE AND EFFICIENT ASPIRATION OF FLUIDS

- Vacuum level and suction power is adjustable in 8 steps (150 to 850 mbar) for safe and reproducible working
- The chemically-resistant pump automatically switches on/off to reduce noise level in the workplace
- You can also use the Aspirator as a mobile vacuum source for sterile filtration and solid phase extraction
- Additional hand controllers and a range of other accessories are available. See website for details

Aspirator

Art. No. N2400-9000

CHF 2614.69

OFFER: CHF 1,961.02*

Discover our range of Aspiration Pipettes



FULLY AUTOCLAVABLE
ergonomically designed hand controller

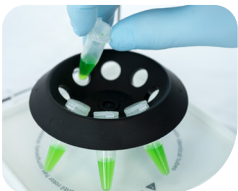
The Minicentrifuge.

AHEAD OF THE CURVE!

Ideal for all your quick spin-downs, the Starlab Minicentrifuge is not all about style, it also has substance! This is a compact and solid unit that delivers a quiet, smooth operation and a maximum speed of 6,500 rpm.

- Quick start on lid closure
- Magnetic lid lock
- One-touch STOP for fast braking and automatic lid release

SUPPLIED WITH TWO ROTORS



Tube Rotor holds up to eight microcentrifuge tubes or eight conical or skirted screw cap microtubes



PCR Strip Rotor holds two, 0.2 ml 8-strips or 32 x 0.2 ml single tubes.



QUICK START
just close the lid
to start spinning!

**QUICK & EASY
TOOL FREE
ROTOR EXCHANGE**

**ONE-TOUCH
STOP** for fast
braking and
lid release

**MAGNETIC
LID LOCK**
aids easy,
one-handed
operation



WATCH VIDEO

Minicentrifuge.

Art. No. S8030-5000

ONLY: CHF 240.71¹⁾

The versatile Mixer HC.

ONE SMALL DEVICE, SO MANY USES.

The Mixer HC is a smart bit of kit that does the work of several other pieces of equipment in the lab. Easy to use and to program, the Mixer HC will become an invaluable benchtop companion to help speed up your laboratory tasks. You will wonder how you ever managed without one!

MIXING
up 1,500 rpm

HEATING
up 99 °C

COOLING
to 13 °C
below room
temperature



TIMING
1 min to
99:59 hours

FUNCTIONAL
Alternate between
mixing and resting.
Create your own
protocols.
Or instant mixing
at the push of a
button



WATCH VIDEO

Mixer HC

Art. No. **S8012-0000** (Excludes Thermoblock)

CHF 3,269.87

OFFER: CHF 2,615.89*

NINE EXCHANGEABLE THERMOBLOCKS

Use the Mixer HC with all popular tubes and plates.

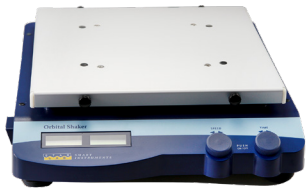
			
24 x 0.5 ml Microcentrifuge Tubes S8012-0010 ¹⁾ CHF 675.03 CHF 540.02*	24 x 1.5 ml Microcentrifuge Tubes S8012-0011 ¹⁾ CHF 675.03 CHF 540.02*	24 x 2.0 ml Microcentrifuge Tubes, Round Bottoms S8012-0012 ¹⁾ CHF 675.03 CHF 540.02*	24 x 2.0 ml Microcentrifuge Tubes Ø 12 mm, V-Bottoms S8012-0013 CHF 838.31 CHF 670.65*
			
8 x 5.0 ml Preparation Tubes S8012-0014 CHF 675.03 CHF 540.02*	8 x 15 ml Conical Centrifuge Tubes S8012-0015 CHF 675.03 CHF 540.02*	4 x 50 ml Conical Centrifuge Tubes S8012-0016 CHF 675.03 CHF 540.02*	24 x 1.5/2.0 ml Cryo Tubes S8012-0017 CHF 675.03 CHF 540.02*
			
Micro/Deepwell Plate, with Lid S8012-0018 CHF 838.31 CHF 670.65*	Adapter Plate 96 x 0.2 ml Tubes or one PCR plate (Use with S8012-0018) S8012-0019 CHF 228.66 CHF 182.93*	ISO-Rack: 24 x 0.5 ml Microcentrifuge Tubes S8012-0020 CHF 94.35 CHF 75.48*	ISO-Rack: 24 x 1.5/2.0 ml Microcentrifuge Tubes S8012-0021 CHF 94.35 CHF 75.48*

¹⁾ Includes ISO Rack. Tubes not included.

Shaking & Mixing.

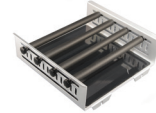
ESSENTIAL EQUIPMENT FOR DAILY TASKS

Orbital Shaker.



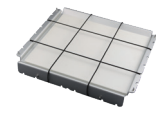
- Speed range: 100–500 rpm
- LCD displays for speed & time
- Continuous or timed mixing
- Supplied without platform

Orbital Shaker
Art. No: N2400-8030
 (excludes platform)
CHF 1,435.14¹⁾



Platform with clamping rolls
 (for use with Orbital, 3D and Rocking Shakers)

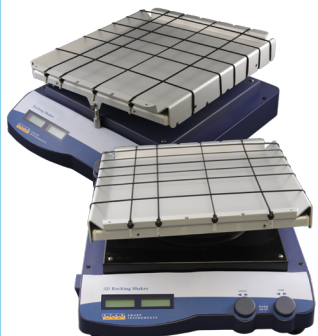
Art. No: N2400-8011
CHF 388.78¹⁾



Platform with rubber mat and bungee cords
 (for use with Orbital, 3D and Rocking Shakers)

Art. No: N2400-8021
CHF 388.78¹⁾

3D / Rocking Shakers.



- See saw rocking or 3D mixing
- Speed range: 10 –70 rpm
- LCD displays for speed & time
- Continuous or timed mixing.
- Supplied with platform with bungee cords

Rocking Shaker
Art. No: N2400-8010
CHF 1,631.96¹⁾

3D Rocking Shaker
Art. No: N2400-8020
CHF 1,631.96¹⁾



Rotator Mixer.

Art. No. N2400-5000

~~CHF 1,100.91~~
OFFER: CHF 825.69*

- Controlled sample inverting
- Speed range: 1 – 100 rpm
- Programmable
- Three different motions
- Variable speed and timer
- Low profile and small footprint



Vertical Rotation
 360° vertical motion for time period of 0–250 seconds, or non-stop.



Reciprocal Motion
 Platform direction changes in turns (turning angle 1–90°) for 0–250 seconds, or non-stop.



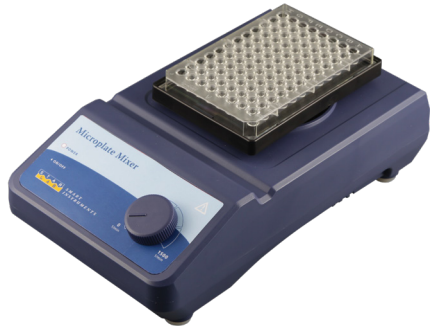
Vibration
 Same as reciprocal motion, plus additional vibration (turning angle 1–5° for 1–5 seconds.



Pause
 Platform direction changes in turns, incl. a temporary motion stop of 1–5 seconds (in conjunction with reciprocal motion only).

Mixing & Stirring.

ESSENTIAL EQUIPMENT FOR DAILY TASKS



Use for mixing and shaking any skirted plate with a SBS footprint, and for resuspending pellets.

- Speed range: 0 – 1500 rpm
- Stepless speed control
- Range of accessories available

Microplate Mixer.

Art. No. N2400-8040

CHF 567.98

OFFER: CHF 425.99*



An economical magnetic stirrer.

- Speed range: 100 – 1500 rpm
- Stirring volume up to 3 litres
- Supplied with 1 x 40 mm stir bar

Magnetic Stirrer.

Art. No. N2400-2010

CHF 252.10

OFFER: CHF 201.68*



Fast temperature ramping saves you time!

- Speed range: 200 – 1500 rpm.
- Temperature range:
ambient to 280 °C (1°C increments)
- Stirring volume up to 3 litres
- Supplied with 1 x 40 mm stir bar

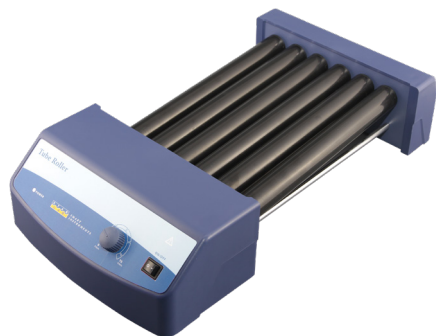
Magnetic Stirrer with Heating.

Art. No. N2400-3010

CHF 489.01

OFFER: CHF 391.21*

Rolling.



Built for continuous operation. Suitable for applications such as hybridisation.

- Simultaneous rolling and tilting motion
- Speed control up to 70 rpm
- Six rollers holds load up to 4 kg

Tube Roller.

Art. No. N2400-7010

CHF 829.19

OFFER: CHF 621.90*

Pipette Stands.



ErgoOne® Universal Carousel Stand for up to 8 pipettes (UV Resistant)

For use with: ErgoOne®, Biohit®, Finn®, Gilson®, Rainin® single or multi-channel pipettes

S7200-0000

CHF 175.68¹⁾



Universal Acrylic Pipette Stand for up to 5 pipettes (UV Resistant)

For use with: ErgoOne®, Biohit®, Finn®, Eppendorf®, Gilson®, Rainin® single or multi-channel pipettes

E3099-0000

CHF 69.78¹⁾



ErgoOne® Self-Adhesive Shelf Holder for 1 pipette (UV Resistant)

For ErgoOne® single or multi-channel pipettes

E3099-0001

CHF 5.24¹⁾



ErgoOne® Bench Support for 1 pipette

For ErgoOne® single-channel pipettes

E3099-0002

CHF 15.75¹⁾
Pack of 5.



ErgoOne® Wall Mount for 1 pipette (UV Resistant)

For use with: ErgoOne®, Eppendorf®, Finn®, Gilson®, Rainin®, Sartorius® single or multi-channel pipettes with finger hook

S7200-0001

CHF 5.80¹⁾



ErgoOne® E Charging Stand for up to 3 pipettes

For ErgoOne® E single-channel pipettes (excluding 5 ml)

G9999-1001

CHF 369.64¹⁾



ErgoOne® E Individual Stand for 1 single-channel pipette

10 µl to 1000 µl
G9999-1002

CHF 87.03¹⁾

5000 µl

G9999-1003

CHF 87.03¹⁾



ErgoOne® E Individual Stand for 1 multi-channel pipette

For ErgoOne® E multi-channel pipettes (excluding 1250 µl)

G9999-1004

CHF 44.67¹⁾

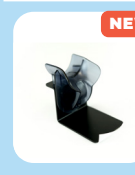


NEW! ErgoOne® E Shelf-Holder for 1 pipette

For ErgoOne® E single or multi-channel pipettes, all volumes

G9999-1009

CHF 27.24¹⁾



NEW! ErgoOne® E Wall Mount for 1 pipette

For ErgoOne® E single or multi-channel pipettes, all volumes

G9999-1010

CHF 59.60¹⁾



NEW! ErgoOne® E Individual Stand for 1 pipette

For ErgoOne® E single or multi-channel pipettes, all volumes

G9999-1011

CHF 135.71¹⁾

Pipettes not included.

ErgoOne® FAST Pipette Controller.

FLEXIBLE, ACCURATE, SAFE TRANSFER



ERGONOMY MEETS MODERNITY

Every aspect of the ErgoOne® FAST has been developed with ergonomics in mind.

ErgoOne® FAST

Art. No. S7166-0010

ONLY: CHF 332.26¹⁾



WATCH VIDEO

- Lightweight and ergonomic
- Designed to balance perfectly in the hand for maximum comfort
- Smooth operation via pressure sensitive control buttons
- Fast! Fills a 25 ml pipette in less than 4 seconds
- Long-life battery provides 25 x ~2000 aspiration cycles on a full charge
- Battery life indicator
- Battery maintains constant pipetting speed that does not diminish as battery charge declines
- Can be recharged during use
- Use with all glass or plastic pipettes, 1.0 ml to 100 ml

Discover our range of Serological Pipettes



Pressure responsive speed controls



Autoclavable aspiration cone and silicone pipette holder ensures a secure seal for your liquids while the filter protects your pipette



Traffic light battery life indicator



Easy to replace battery



Benchtop support allows you to place the controller on the bench or hood floor without risk of contamination

ErgoOne® FAST Benchtop Support

Art. No: P7166-6306

ONLY: CHF 10.81¹⁾

ErgoOne® E Electronic Pipettes.

INCREASE EFFICIENCY IN YOUR LAB

- Easy to use intuitive menu structure
- Lightweight, ergonomic design
- Adjustable finger rest for individual comfort
- Significantly reduced tip loading and ejection forces
- Universal tip fit

ErgoOne® E

from: **CHF 486.59¹⁾**

ErgoOne® E OPERATING MODES

Pipetting | Reverse Pipetting | Mixing
Dispense | Electrophoresis¹⁾

Single-Channel ErgoOne® E Pipettes

G9001-0010 0.5 – 10 µl CHF 486.59¹⁾	G9001-0020 2.0 – 20 µl CHF 486.59¹⁾	G9001-0200 10 – 200 µl CHF 486.59¹⁾	G9001-1000 50 – 1,000 µl CHF 486.59¹⁾	G9001-5000 250 – 5,000 µl CHF 486.59¹⁾
--------------------------------------------------------------------	--------------------------------------------------------------------	--------------------------------------------------------------------	----------------------------------------------------------------------	-----------------------------------------------------------------------

8-Channel ErgoOne® E Pipettes

G9008-0010 0.5 – 10 µl CHF 892.46 CHF 758.59*	G9008-0020 1.0 – 20 µl CHF 892.46 CHF 758.59*	G9008-0100 5.0 – 100 µl CHF 892.46 CHF 758.59*	G9008-0300 15 – 300 µl CHF 892.73 CHF 758.82*	G9008-1250 50 – 1250 µl CHF 892.46 CHF 713.97*
-----------------------------------------------------------------------------	-----------------------------------------------------------------------------	------------------------------------------------------------------------------	-----------------------------------------------------------------------------	------------------------------------------------------------------------------

12-Channel ErgoOne® E Pipettes

G9012-0010 0.5 – 10 µl CHF 1,065.39 CHF 905.58*	G9012-0020 1.0 – 20 µl CHF 1,065.39 CHF 905.58*	G9012-0100 5.0 – 100 µl CHF 1,065.39 CHF 905.58*	G9012-0300 15 – 300 µl CHF 1,065.39 CHF 905.58*	G9012-1250 50 – 1250 µl CHF 1,065.39 CHF 852.31*
-------------------------------------------------------------------------------	-------------------------------------------------------------------------------	--------------------------------------------------------------------------------	-------------------------------------------------------------------------------	--------------------------------------------------------------------------------

¹⁾ GEL mode is not available on ErgoOne® E models: 1000 µl, 1250 µl, 5000 µl.

MULTI-CHANNEL COMBO PACKS! 10 µl to 300 µl multi-channel pipettes supplied with an individual stand (G9999-1004) and one rack of TipOne® pipette tips. 1250 µl models supplied with a pipette shelf holder (G9999-1009) and two racks of TipOne® pipette tips.



NEW!

50 – 1250 µl
multi-channel
pipettes



See page 9
for stands

ErgoOne[®] Manual Pipettes.



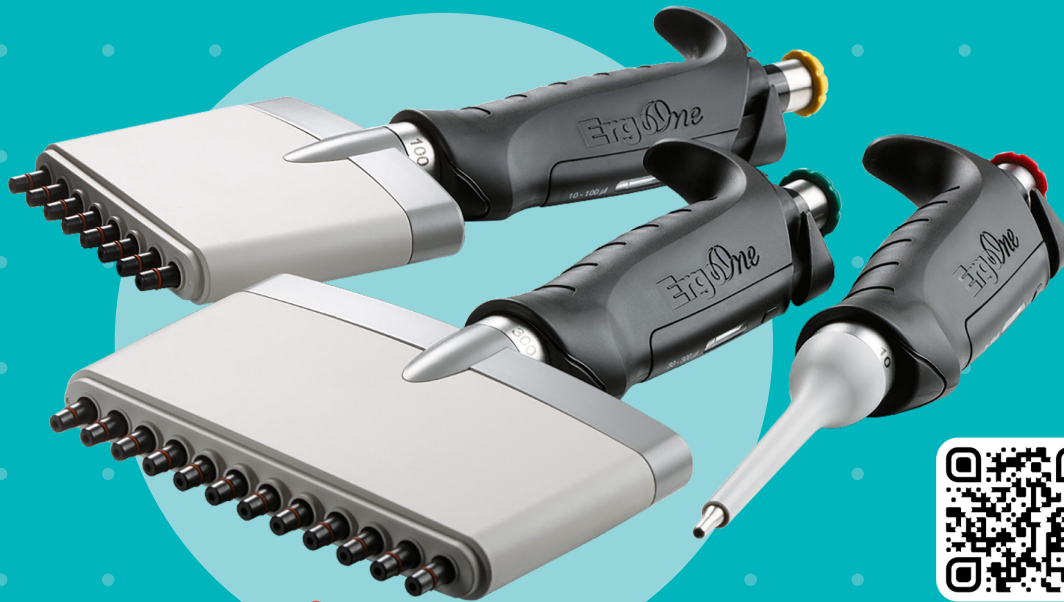
See page 9
for stands

ACCURACY AND PRECISION YOU CAN TRUST!

- Ergonomic and lightweight
- Minimal operating forces
- Volume lock
- Universal tip fit (excl. 5.0 ml)
- Colour coded

ErgoOne[®]

from: CHF 170.76¹⁾



WATCH VIDEO

Single-Channel Manual Pipettes

0.1 – 2.5 µl (red) S7100-0125 CHF 170.76¹⁾	0.5 – 10 µl (red) S7100-0510 CHF 170.76¹⁾	2 – 20 µl Micro (red) S7100-0221 CHF 170.76¹⁾	2 – 20 µl (yellow) S7100-0220 CHF 170.76¹⁾
10 – 100 µl (yellow) S7100-1100 CHF 170.76¹⁾	20 – 200 µl (yellow) S7100-2200 CHF 170.76¹⁾	100 – 1,000 µl (blue) S7110-1000 CHF 170.76¹⁾	500 – 5,000 µl (violet) S7150-5000 CHF 170.76¹⁾

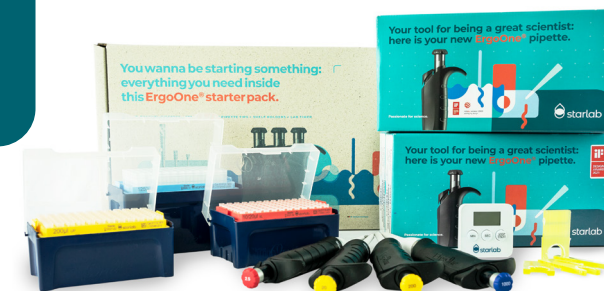
8-Channel Manual Pipettes

0.5 – 10 µl (red) S7108-0510 CHF 492.29 CHF 418.44*	10 – 100 µl (yellow) S7108-1100 CHF 492.29 CHF 418.44*	30 – 300 µl (green) S7108-3300 CHF 492.29 CHF 418.44*
-----------------------------------------------------------------------------------	--------------------------------------------------------------------------------------	-------------------------------------------------------------------------------------

12-Channel Manual Pipettes

0.5 – 10 µl (red) S7112-0510 CHF 527.41 CHF 448.30*	10 – 100 µl (yellow) S7112-1100 CHF 586.77 CHF 498.75*	30 – 300 µl (green) S7112-3300 CHF 586.77 CHF 498.75*
-----------------------------------------------------------------------------------	--------------------------------------------------------------------------------------	-------------------------------------------------------------------------------------

ErgoOne® Starter Packs.

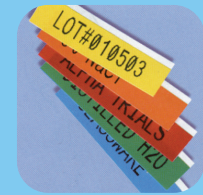


Reliability is key so your pipette must be trusted to provide accurate and precise pipetting, day in, day out. ErgoOne® manual pipettes provide you with both the reliability you need and an ergonomic design that prevents fatigue over long periods to help keep your pipetting consistent. ErgoOne® pipettes have tighter specifications than ISO8655, and feature a volume lock to ensure the correct volumes in your reaction.

CONTENTS	STARTERPACK	STARTERPACK42.5	STARTERPACK410
0.1 – 2.5 µl ErgoOne® Single-Ch Pipette S7100-0125		●	
0.5 – 10 µl ErgoOne® Single-Ch Pipette S7100-0510			●
2.0 – 20 µl ErgoOne® Single-Ch Pipette, Standard Cone S7100-0220	●	●	●
20 – 200 µl ErgoOne® Single-Ch Pipette S7100-2200	●	●	●
100 – 1000 µl ErgoOne® Single-Ch Pipette S7110-1000	●	●	●
TipOne® Pipette Tips (three racks of sterile tips per pack)	●	●	●
Self-Adhesive Pipette Holder (one holder per pipette supplied)	●	●	●
Laboratory Timer (one timer per pack)	●	●	●
PRICE:	CHF 538.04¹⁾	CHF 713.46¹⁾	CHF 713.46¹⁾

ErgoOne® pipettes and Starlab's trusted TipOne® pipette tips create the perfect pipetting partnership.

Brady® Printer & Labels.



PRINTER FEATURES

- 133 symbols
- Barcoding options
- Auto label function cuts according to the size of the vial
- Automated serialisation
- Save up to 12 label styles
- Time and date stamp
- Three-line LCD display for clear visibility
- Auto shut-off saves battery life

Brady M210-LAB PRINTER

Blister pack containing Printer, Quick Start Guide, N5127-7425 label cartridge ready installed. Batteries not included. 2-year warranty.

Art. No: N3000-2000

ONLY: CHF 200.80¹⁾

HIGH QUALITY LABEL MATERIALS DESIGNED FOR THE LAB ENVIRONMENT

Label Cartridge Information & Ordering						Label Applications			
Label material	Colour	Width	Article No.	List	OFFER	Material specifications / applications	Vials	Slides	Plates
B-595 Vinyl	Various ²⁾	9.5 mm	N3795-439#²⁾	CHF 57.72	CHF 40.41*	Freezer: Min. -40 °C.	0.5 ml		✓
	White	9.5 mm	N3795-4399	CHF 57.72	CHF 40.41*		0.5 ml		✓
B-461 Polyester	White	9.5 mm	N3795-4619	CHF 67.99	CHF 47.59*	Freezer: Min. -80 °C. Liquid Nitrogen ²⁾ : -196 °C. Autoclave: 121 °C. Hot Water Baths: 100 °C. Barcoding (19.1 mm only) Low profile, extremely thin labels.	0.5 ml		✓
	White	12.7 mm	N5127-4619	CHF 79.23	CHF 55.46*		1.5 ml		✓
	White	19.1 mm	N7519-4619	CHF 90.59	CHF 63.41*		2.0 – 50 ml		✓
B-488 Polyester	White	9.5 mm	N3795-4889	CHF 62.90	CHF 44.03*	Freezer: Min. -80 °C. Autoclave: 121 °C. Barcoding (19.1 mm labels only)	0.5 ml	✓	✓
	White	12.7 mm	N5127-4889	CHF 74.04	CHF 51.85*		1.5 ml	✓	✓
	White	19.1 mm	N7519-4889	CHF 85.16	CHF 59.61*		2.0 – 50 ml	✓	✓
B-499 Nylon	White	9.5 mm	N3795-4999	CHF 51.62	CHF 36.14*	Freezer: Min. -80 °C. Liquid Nitrogen ²⁾ : -196 °C. Autoclave 121 °C.	0.5 ml	✓	✓
	White	12.7 mm	N5127-4999	CHF 54.16	CHF 37.91*		1.5 ml	✓	✓
B-7425 Polypropylene	White	19.1 mm	N7519-4999	CHF 69.79	CHF 48.85*	Freezer: Min. -80 °C. Autoclave: 121 °C. Hot Water Baths: 100 °C. Barcoding	2.0 – 50 ml	✓	✓
	White	9.5 mm	N3795-7425	CHF 63.37	CHF 44.36*		0.5 ml	✓	✓
	White	12.7 mm	N5127-7425	CHF 74.33	CHF 52.03*		1.5 ml	✓	✓
B-423 Polyester	White	19.1 mm	N7519-7425	CHF 85.20	CHF 59.64*	Freezer: Min. -80 °C. Autoclave: 121 °C. Hot Water Bath: 100 °C Barcoding	2.0 – 50 ml	✓	✓
	White	19.1 mm	N7519-4239	CHF 77.71	CHF 54.39*		2.0 – 50 ml	✓	✓
B-430 Polyester	Clear	19.1 mm	N7519-4300	CHF 77.71	CHF 54.39*	Freezer: Min. -80 °C. Autoclave: 121 °C. Hot Water Bath: 100 °C Barcoding	2.0 – 50 ml	✓	✓
B-403 Paper Water Dissolvable	White	19.1 mm	N7519-4039	CHF 62.85	CHF 43.99*	For temporary labelling/barcoding. Dissolves within 30 seconds of contact with warm water.	Erlenmeyers or any reusable container that requires frequent re-labelling		

¹⁾ To order colour required, replace # as last digit of Article No. with: 1 for blue, 2 for green, 4 for red, 6 for yellow.

²⁾ Acceptable for use in liquid nitrogen only if the ends of the label overlap.

All labels 6.4 m long, except B-499 Nylon which are 4.8 m long. All suitable for use with Brady printers: LabPal™, BMP™21, BMP™21-PLUS and M210-LAB.

Erlenmeyer Flasks.

NEW!



DESIGNED TO BE REUSED

Ideal for the cultivation of bacteria, yeast and fungi, as well as plant and animal cells in suspension. Autoclavable and reusable.

PRODUCT FEATURES:

- Optically clear polycarbonate flasks
- Moulded graduations for easy volume measurement
- Leakproof and shatterproof
- Dual-function, vented polypropylene cap provides sterile air exchange or a tight seal
- Suitable for use for both aerobic and anaerobic cultures
- 0.22 µm PTFE cap membrane
- Compatible with standard shaking incubator tables and clamps
- Individually-wrapped
- Sterility level (SAL 10⁻⁶) fulfils the highest demands
- Certified RNase, DNase, DNA and Pyrogen free
- Autoclavable and reusable up to 10 times



	Description	Pack Size	Art. No.	List Price	OFFER*
FLAT BASE 	125 ml Erlenmeyer Flask, Flat	24	E5000-1012	CHF 278.29	CHF 208.72*
	250 ml Erlenmeyer Flask, Flat	12	E5000-1025	CHF 183.59	CHF 137.69*
	500 ml Erlenmeyer Flask, Flat	12	E5000-1050	CHF 240.94	CHF 180.70*
	1000 ml Erlenmeyer Flask, Flat	6	E5000-1100	CHF 168.38	CHF 126.29*
	2000 ml Erlenmeyer Flask, Flat	6	E5000-1200	CHF 212.33	CHF 159.25*
	3000 ml Erlenmeyer Flask, Flat	3	E5000-1300	CHF 254.19	CHF 190.65*
BAFFLED BASE 	125 ml Erlenmeyer Flask, Baffled	24	E5001-1012	CHF 278.29	CHF 208.72*
	250 ml Erlenmeyer Flask, Baffled	12	E5001-1025	CHF 183.59	CHF 137.69*
	500 ml Erlenmeyer Flask, Baffled	12	E5001-1050	CHF 240.94	CHF 180.70*
	1000 ml Erlenmeyer Flask, Baffled	6	E5001-1100	CHF 168.38	CHF 126.29*
	2000 ml Erlenmeyer Flask, Baffled	6	E5001-1200	CHF 212.33	CHF 159.25*
	3000 ml Erlenmeyer Flask, Baffled	3	E5001-1300	CHF 254.19	CHF 190.65*



DUAL-FUNCTION CAPS

Polypropylene caps with a 0.22 µm PTFE membrane, ideal for both aerobic and anaerobic cultures. Remove the top section to allow sterile exchange, and then replace when ready. Avoid contamination risk and the hassle of switching caps and stock only one flask type for all cultures.

5.0 ml Tips for ErgoOne® E.

OPTIMAL TIP FIT

Ideal for delicate pipetting out of tall and narrow vessels, these 5.0 ml tips are provided in an easy-to-handle round rack.

PRODUCT FEATURES:

- Slim design: 160 mm long and approx. 9.6 mm in diameter, these tips are perfect for pipetting from tall and narrow vessels
- Compatible with ErgoOne® E, Brand® and Finnpipette®
- Certified RNase, DNA and ATP free

Art. No: **E1070-2607**

Pack size: 1 x 28-tip rack

~~CHF 29.35~~

OFFER: CHF 22.01*



5.0 ml ErgoOne® E electronic pipette.

G9001-5000

250 – 5,000 µl ErgoOne® E

ONLY: CHF 486.59¹⁾

See page 11 for the full range of ErgoOne® E pipettes.



¹⁾Price excludes VAT.

*Offer price exclusive of VAT and valid until 13.12.2024.



T: +41 56 6645 980
info@starlab.ch
www.starlab.ch

Passionate for science.

